

2019 MODEL YEAR

# 130 SUPER SPORT



## TEST #1

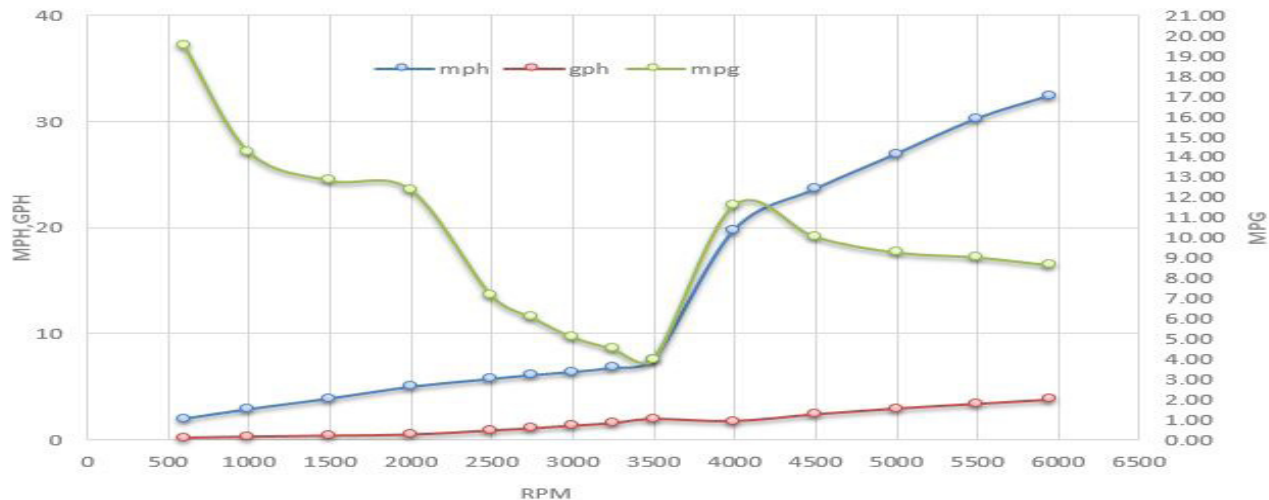
Model: 130 Super Sport  
 Hull #: USBWCE0021F819  
 Engine: Mercury 40 FourStroke  
 Horsepower: 40  
 Gear Ratio: 2.00 : 1  
 Prop: 10.1" x 14" Spitfire  
 Fuel Capacity: 6 gallons  
 Notable Options: Teak package, Bimini top  
 Test Date: 11-June-2018

## WEIGHT SUMMARY

Dry Weight: 798 lbs  
 Fuel: 6 gallons  
 Water: 0 gallons  
 Test Gear: 272 lbs  
 Personnel: 390 lbs  
 Test Weight: 1,497 lbs  
 Water Conditions: 82° F  
 Weather Conditions: 78° F

	RPM	Speed		Fuel Consumption			
		mph	knots	gph	mpg	nmpg	range (mi)
Idle	600	2.0	1.7	0.10	19.50	16.93	105
	1000	2.9	2.5	0.20	14.25	12.37	77
	1500	3.9	3.3	0.30	12.83	11.14	69
	2000	5.0	4.3	0.40	12.38	10.75	67
	2500	5.7	4.9	0.80	7.13	6.19	38
	2750	6.1	5.3	1.00	6.05	5.25	33
	3000	6.4	5.5	1.25	5.08	4.41	27
	3250	6.8	5.9	1.50	4.50	3.91	24
	3500	7.6	6.6	1.90	3.97	3.45	21
	4000	19.8	17.2	1.70	11.62	10.09	63
	4500	23.6	20.5	2.35	10.04	8.72	54
	5000	26.9	23.4	2.90	9.28	8.06	50
	5500	30.3	26.3	3.35	9.03	7.84	49
	WOT	5950	32.4	28.1	3.75	8.64	7.50

Acceleration: time to plane 7.8 secs  
 Idle - 30 mph 18.6 secs



Notes: 1) Speed determined by GPS. Fuel consumption based on total usage by the engines. MPG computed from MPH & GPH. Range based on 90% of total fuel capacity. 2) The performance data shown should be considered valid only for the specific boat whose serial number is shown and on the date this test was performed. Many factors may affect the actual performance of this boat or of similar boats. Such factors include, but are not limited to, installation of certain options such as towers and hard tops, vessel loading and trim, weather and sea conditions, engine condition, propeller condition and hull bottom condition. Boston Whaler makes no guarantee whatsoever that this performance will be repeated on this boat at a later date or at any time on a similarly equipped boat.

2019 MODEL YEAR

# 130 SUPER SPORT



130 Super Sport 2019 Engine Comparison Graph

